

# ESCAPE DESCENDER

PART CODE: **EDRK020KD** | **EDRK025KD**



## PRODUCT INFORMATION >

The Linq Escape Descender is an emergency escape descender device designed to be used on elevated work platforms e.g. cherry pickers, boom lifts, man baskets, line baskets and all extended EWP's. This device allows safe decent in either an emergency or if a breakdown occurs of the EWP.

## PRODUCT FEATURES >

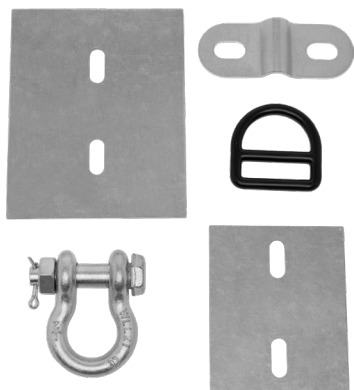
- CDD: controlled decent device to allow self control of decent or from the ground
- Kernmantle rope: 11mm
- Karabiner and hammerlock
- Attachment eye anchor and anchorage plate
- High reflective orange storage drop box

## PRODUCT DETAILS >

- Box Material: Load Density Polyethylene
- Rope Length: 20m - EDRK020KD  
25m - EDRK025KD

## STANDARDS >

Refer to AS/NZS1891:4 for usage and mounting.



### LINQ HEIGHT SAFETY

2/980 ABERNETHY ROAD,  
HIGH WYCOMBE, WA 6057  
TECH SUPPORT: 1300 546 747  
CUSTOMER SERVICE: 1300 770 723  
EMAIL: INFO@PARAMOUNTSAFETY.COM

### LINQ HEIGHT SAFETY NEW ZEALAND

7 SIR WOOLF FISHER DRIVE, Highbrook,  
EAST TAMAKI, AUCKLAND 2013  
TECH SUPPORT: 0800 546 747  
CUSTOMER SERVICE: 0800 888 778  
EMAIL: INFO@PARAMOUNTSAFETY.CO.NZ

[WWW.LINQHS.COM](http://WWW.LINQHS.COM)  
[WWW.PIPANZ.COM](http://WWW.PIPANZ.COM)

